

LONGWILL K1 Pre roll cone filling machine

operation manual

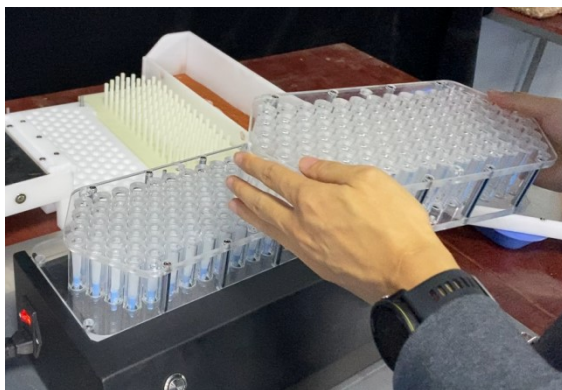
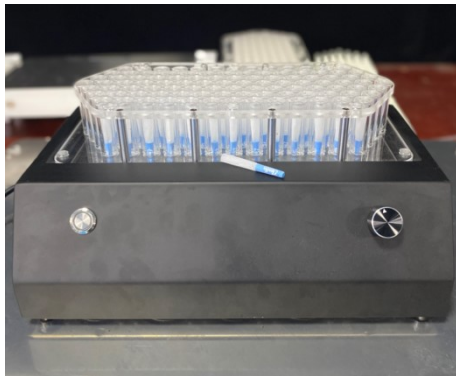


1. NO. 5 have two parts, NO.5-1 and NO.5-2.

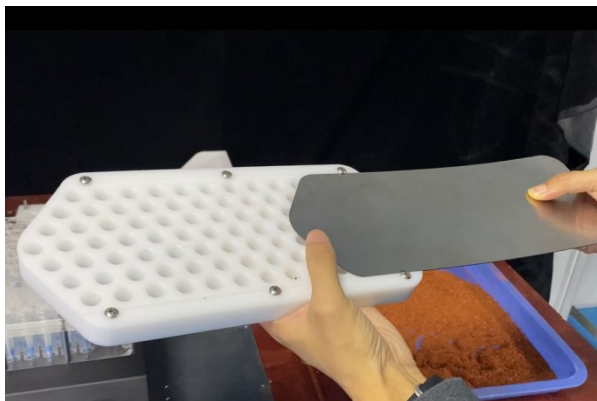


2. Put No.5-1 on the machine as below, then put your pre roll pater in the

tray, then put NO.5-2 on the NO.5-1.



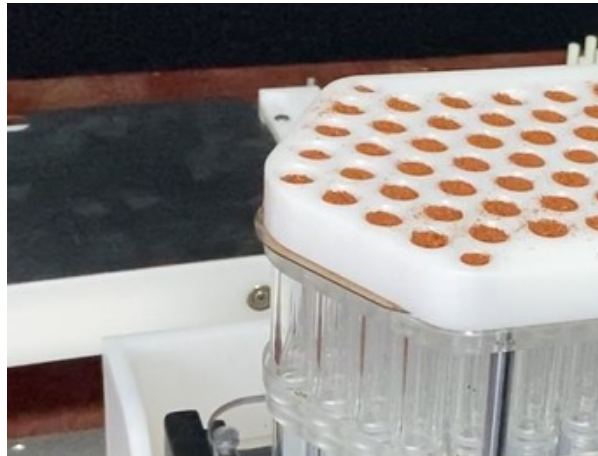
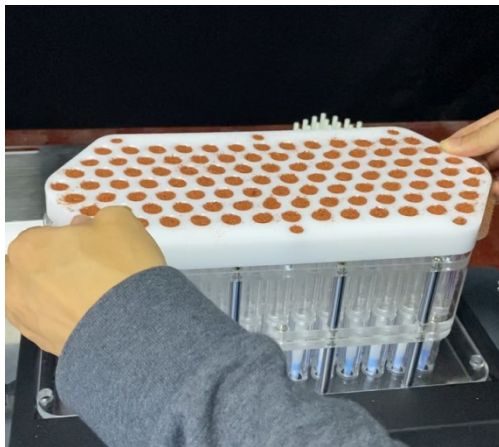
3. Insert No.7 (metal board) into No. 2 , as below:



4. Put flowers in NO. 2 as below:



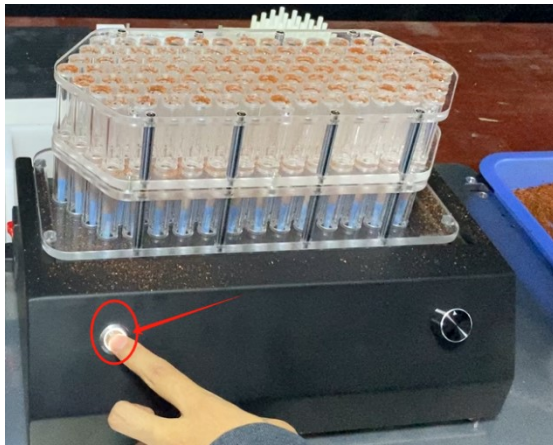
5. Put NO. 2 on the machine. then press “Start” button, then Pull out the metal board (No.7):



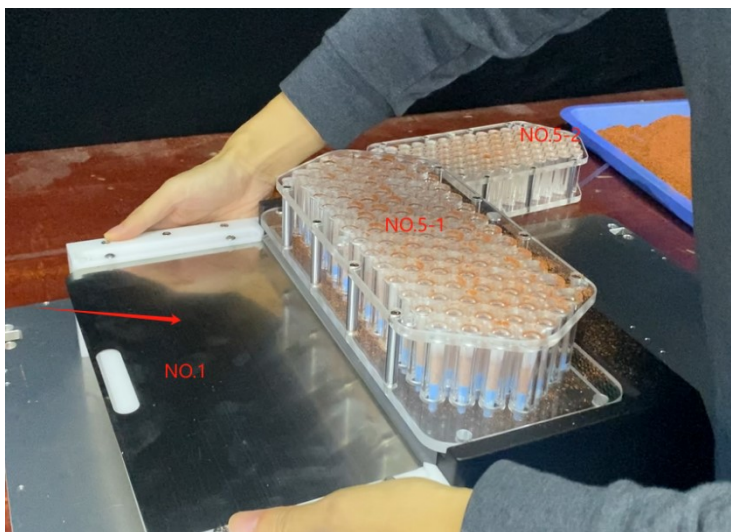
6. Move off NO.2, use a brush, push all the remaining flowers into the holes in the tray,

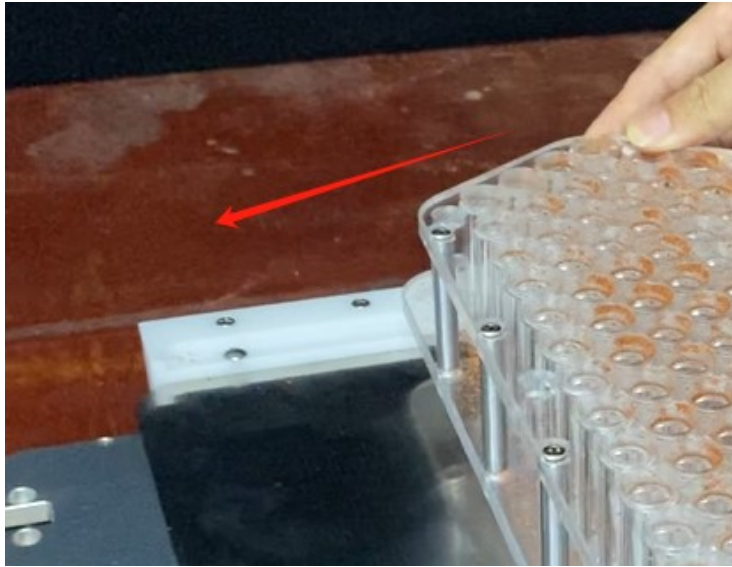


7. press "Start" stop it after all flowers go into pre roll paper.



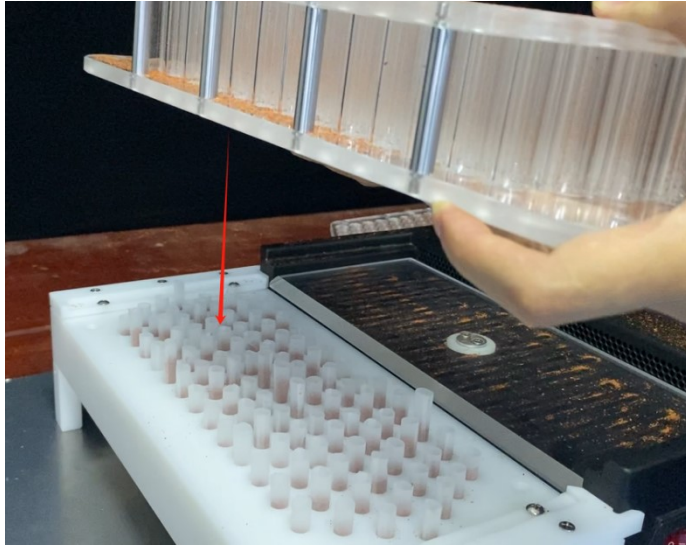
8. Move off NO.5-2, and Move NO5-1 tray to No.1 part , as below:



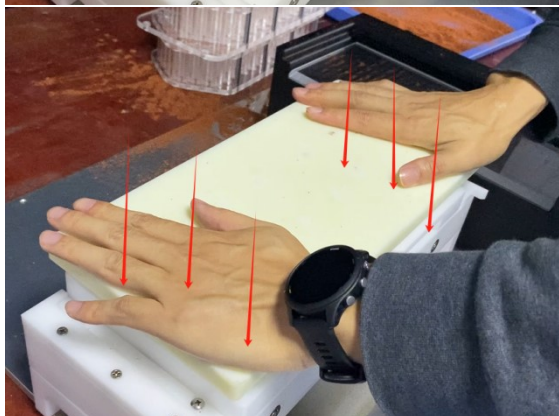
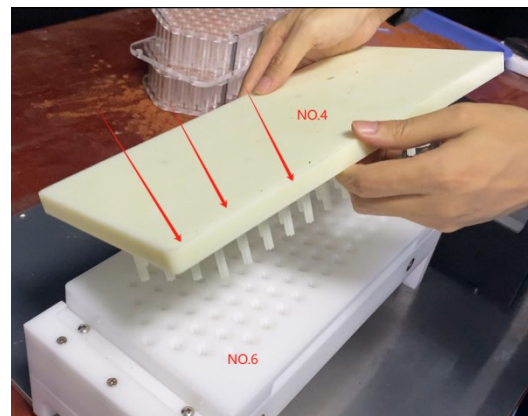
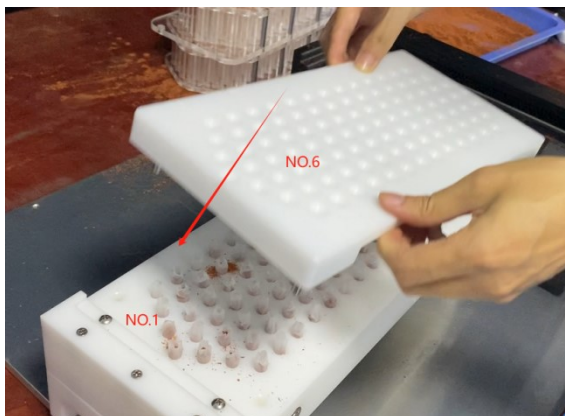


9. Then pull out the metal board as below, until all pre roll go down the sealing tray:

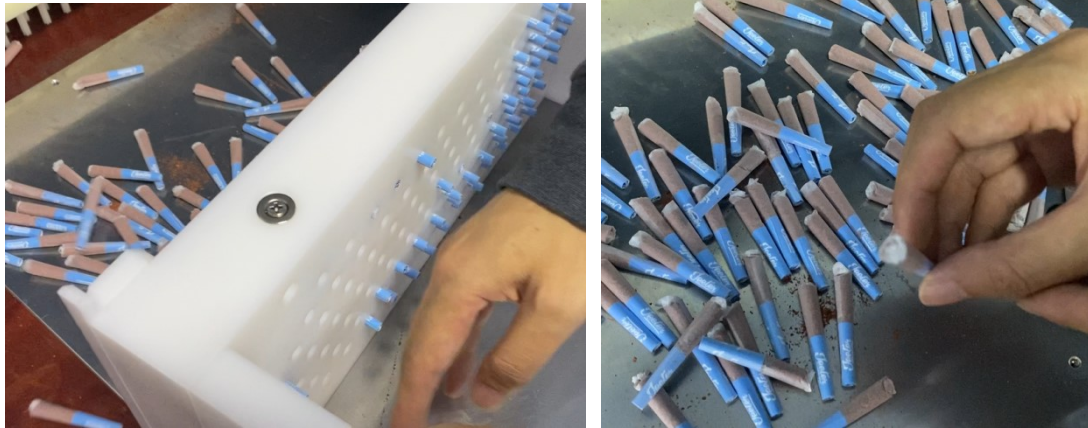




10. Then put NO.6 part on the No.1 sealing tray. And put NO.4 sealing board on the No.6, then press pre roll firmly to sealing pre roll well.



11. Move No.4 and No.6. get out of pre roll:



Done.

Thank you so much for checking, should you have any questions on manual, please contact us.

Hope our machine help you well. Thank you so much.

Longwill Tech