

LONGWILL FM16

Smart Filling Machine Operation Steps

1, Plug in, Power on

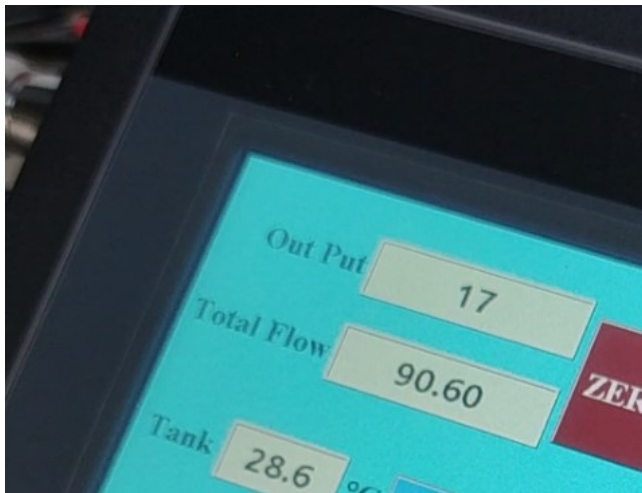


2, Enter system



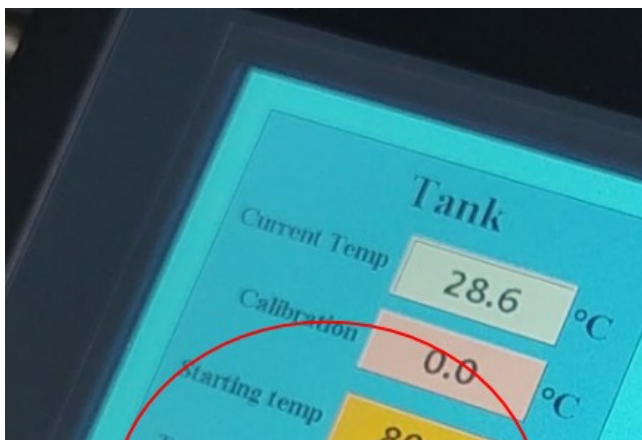
3, Temp control setting

Click temp control

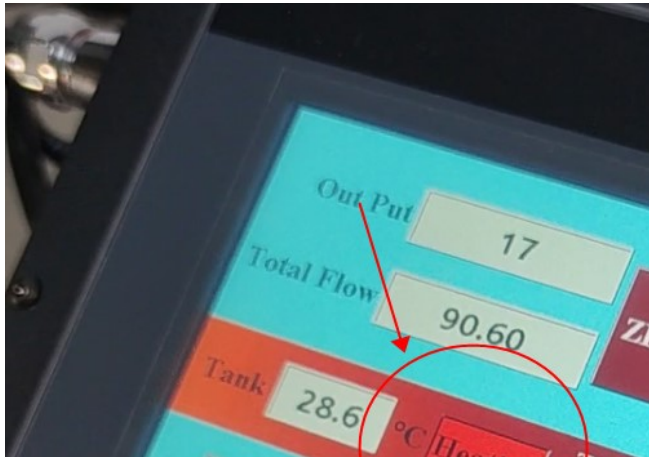


Enter the Temp Setting, Starting Temp,

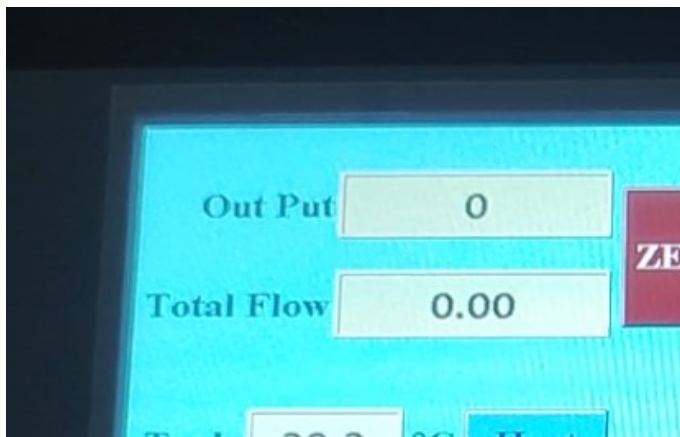
Click: Temp-controlled opening (if temp doesn't reach to the setting temp, machine won't work)



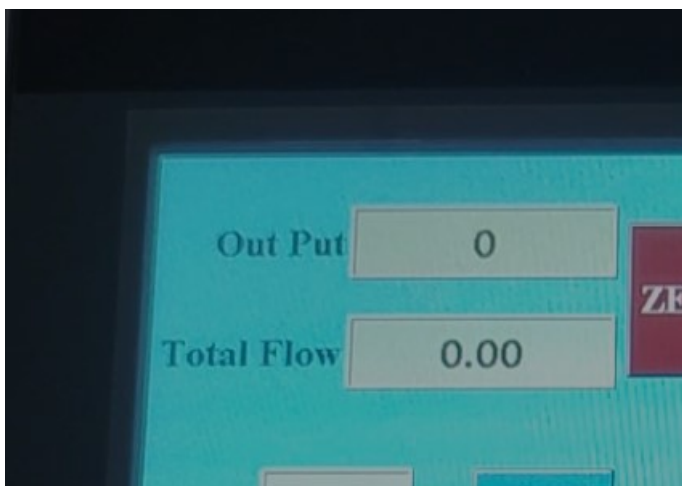
Go to Work PG, Click "Heat", it will change into "Heating"



- 4, After temp reaches at Starting temp, Clean air**
Click Reset, click Clean, it will change it "Cleaning"
It will take 10seconds to clean air in the tube and injector



- 5, Set oil filling capacity**

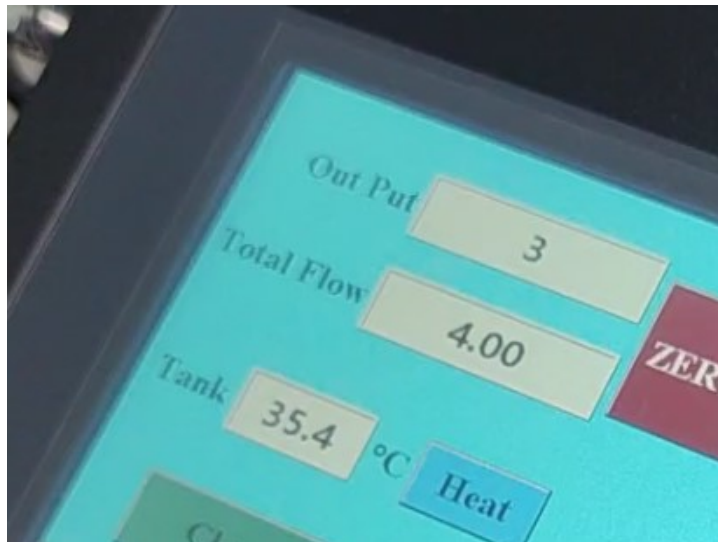


- 6, Start Fill**
6.1 Debug state filling, Click Debug, Step on switch, release, then step on



6.2 Auto mode filling

Click Auto, Step on switch, no need release



7 Clear the output number and total flow volume

